



PORTFOLIO

Elisa Malachin



In the following pages, you'll find a small selection of all the pieces that I have done during these years working as a RTW pattern maker and CAD marker making (fabric consumption optimization).

Most of the pieces are outerwear garments with prints, checked fabrics, and embroideries. Some of them are runway pieces, prototypes or productions.

The reason for this specific selection is my passion for prints and challenging works.

Continuing, you'll find the men's section, leather's section, and few featherweight's pieces that I have done.



DIOR CRUISE 2020 - PRINTS

The collection inspired by Marrakech, involves massive lions, winged mythological creatures, glowering birds, and funny references to the number and words associated with the tarot (10, 27, Le Monde).

I designed all these looks to stand out the wax prints but also taking care of fabric consumption optimization.



Dior Fall 2020: adv campaign, runway, and Kiwi Lee supplied by Dior.



DIOR FALL 2019 CHECKED FABRICS

Dior adv campaign Fall 2019
Checked coats.



Dior F/W 19-20

In addition to creating patterns, I also take care of CAD Marker Making and quality control. Part of my job includes also matching every single line of the fabric with its respective piece of the model in order to obtain a clean and luxury result as you can see above.



Dior Fall 2019



Dior men's autumn/winter 2020

Dior Fall 2020 Men's Collection
show in Miami



Celine Fall 2019



PARIS FASHION WEEK 2020

Starting from the left: Madelynn Furlong, Aida Domenech&Pelayo and, Bianca Brandolini wearing Dior FW 2020.

I contribute creating the pattern and fabric placement of these models.



LEATHER&CO.

Left, Hailey Baldwin wearing the leather coat supplied by Balenciaga and produced by Pellemoda.

Above, a prototype that I made for Dior men's collection.



Bally Fall 2020 - Leather coat.



Coach F/W 2019 - Adv campaign.



LEATHER&LOGO

Fendi S/S 2019



FEATHERWEIGHT

Left, Billie Eilish supplied by Valentino. Above, Valentino x Moncler FW 2018.

These are just two examples of the feather's calculation that I've done.



“CLASSY CHAOTIC TRAVELER”

FW 2017

Elisa Malachin



THE CONCEPT

Inspiration, research, and muse.



THE INSPIRATION

During my Master's at Polimoda, I created my collection called *"Classy chaotic traveler"*.

The collection is influenced by the glamour of the '50s and the title says a lot about my life and vision but let's start from the beginning.

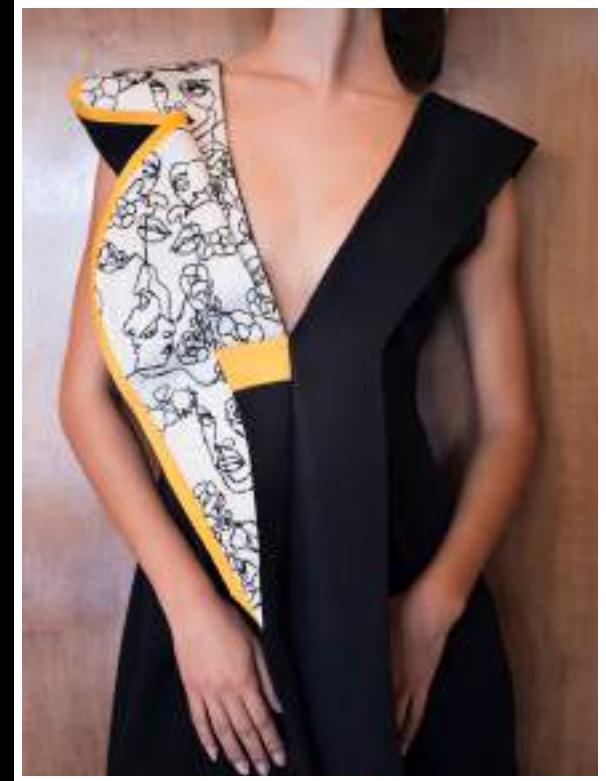
Since I was younger, I have traveled a lot. Europe, Africa, United States... nothing really stopped me. But I always found the same recurring frustration: how people dress during trips.

I asked myself: "How can I make a collection elegant and wearable at the same time?" and "What should I do for this new generation of woman 2.0?"



THE COLLECTION





Fabrics: silk organza, wool crepe, cotton, and silk.

Colors: black, white, yellow, and emerald.

Embellishment: handmade embroidery and printed silk foulard.

All the pieces of the capsule collection, are designed, sewn, and embroidered by myself. Even the patterns of the silk foulards.



